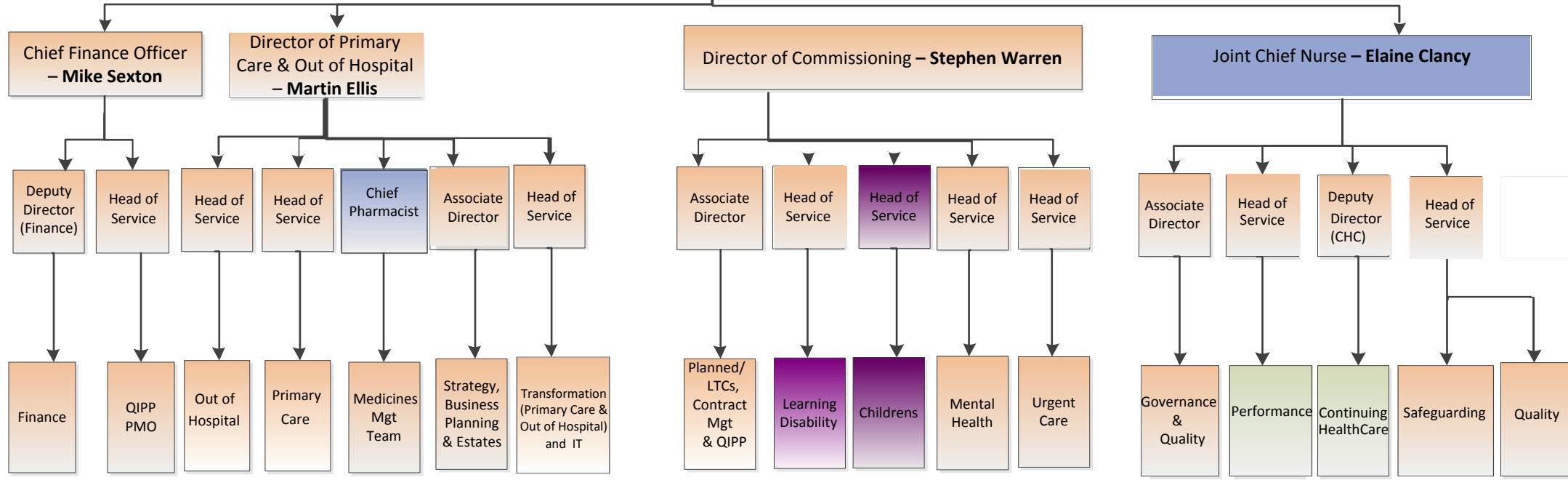


CHIEF OFFICER – Andrew Eyres



- Named Senior Managers:**
- Deputy Director of Finance – Marion Joynson
 - Head of PMO – Kate Archer
 - Head of Out of Hospital – Kieran Houser
 - Head of Primary Care – Leilla Thomas (Interim)
 - Chief Pharmacist (Joint with Croydon Health Services NHS Trust) – Louise Coughlan
 - Assoc Dir. Strategy, Business Planning & Estates – Fouzia Harrington
 - Head of Transformation (Primary & Out of Hospital) & IT – Marc Wilmott
 - Assoc Dir. Planned Care Commissioning Service Redesign & QIPP – Aarti Joshi
 - Head of Learning Disabilities – Jennifer Francis (interim)
 - Joint Head of Children & Maternity integrated Commissioning – Amanda Tuke
 - Head of Mental Health – Richard McSorley (Interim)
 - Head of Urgent Care – Darren Cooper
 - Assoc Dir. Governance & Quality – Simon Lee
 - Head of Performance Assurance & Emergency Planning – Leo Whittaker
 - Deputy Director of Continuing Healthcare – Rachael Colley
 - Assoc Dir. Quality & Governance – Simon Lee
 - Assoc Dir. Safeguarding & Quality – Sally Innes

PORTFOLIOS:

- Finance:** Financial Strategy, Management and Governance.
- QIPP PMO:** Project Management Governance & Training, QIPP Development, Monitoring and Performance.
- Strategy & Business Planning:** Strategy, Collaborative Commissioning, Business Planning, Estates and Procurement
- Service Redesign & QIPP Development:** Acute and Planned Commissioning and Care Pathway Redesign, Horizon Scanning, Identification & Development of New QIPP Opportunities.
- Out of Hospital and Urgent Care Development & Delivery:** Primary and Out of Hospital Strategy & Policy Development, Primary Care Development, Clinical Engagement & Urgent Care.
- Medicines Management:** Prescribing Advice, Medicines Optimisation, Primary Care Variation, Practice Support, Community and Care Home Support.
- Quality:** Quality and Patient Safety, Communications and PPI, Clinical Governance, Complaints & Serious Incidents
- Assurance/Performance:** Operating Plan Performance
- Governance:** Risk Management, Health & Safety, Equalities & Diversity
- Safeguarding:**

Key

- Joint Post (CHS Trust)
- LA Posts
- Filled Posts
- CSU Posts